

THE NEXT STEP

Sponsorship is a vital component necessary to help advance the work of the Van der Brohe Arboretum.

We thank you for your consideration in sharing our commitment to the community and to the earth.

We invite you to contact our Director to secure a location for your Franciscan Garden.

John S. Durbrow, Director

Van der Brohe Arboretum
9601 Lakeshore Rd, Newton, WI 53063

920.726.4850

director@vanderbrohearboretum.org

OUR MISSION

Van der Brohe Arboretum is engaged in the creation of a 65-acre ecological center in Two Rivers, Wisconsin. Trees, meadows and migratory bird food plots will provide a rich diversity of value to avian communities.

The grounds will ultimately provide an expository narrative of the value of trees to the earth, the climate, the biota of the region, and of course, to human interests such as art appreciation, passive recreation, birding, meditation, and relaxation.

Van der Brohe Arboretum inculcates a vibrant bond between trees, nature, art, and people. It is a place where contemplation and discovery are fostered. Committed to the support of silviculture, migratory stopover, stewardship of the landscape, artistic expression, and education, Van der Brohe Arboretum intimately links visitors with the natural environment through the grounds, exhibitions, and programming.



VAN DER BROHE
ARBORETUM & BIRD SANCTUARY

vanderbrohearboretum.org

a non-profit 501(c)(3) organization

Sponsoring a Franciscan Garden

VAN DER BROHE ARBORETUM
AND BIRD SANCTUARY

Franciscan Gardens

Trail intersections in the circulation paths at Van der Brohe Arboretum will feature Franciscan Gardens sponsored by garden enthusiasts and landscaping professionals.

As are all the installations at Van Der Brohe Arboretum, these Gardens are intended to be beautiful, expository and contributing to the organization's mission.

Following in the tradition of St. Francis, the trees, shrubs, plants and grasses in each installation will be selected for their ability to provide shelter and sustenance for birds and wildlife.

Each Garden will offer different groupings to comprise a variety of decorative models that visitors will be encouraged to emulate.

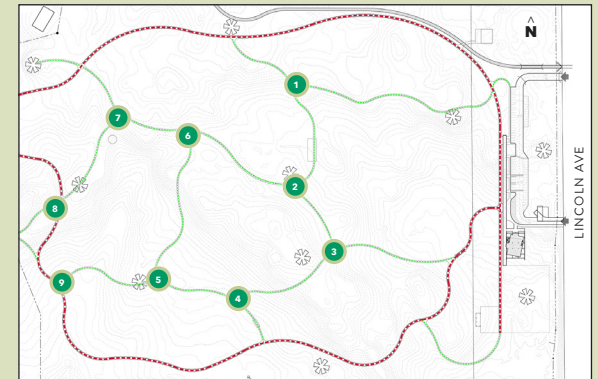
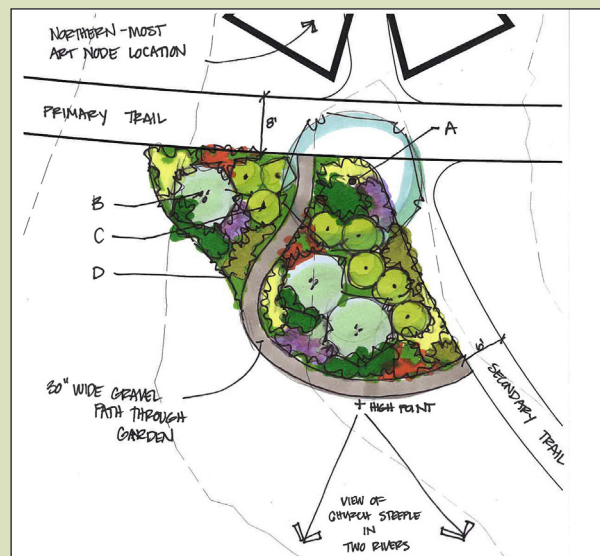
SPONSORSHIP DETAILS

Each Franciscan Garden will be funded by, installed, and maintained by a local sponsor.

Gardens will be about 500 square feet in area and will include, at minimum:

- One major tree
- Six shrubs
- Sixteen bushes or woody plants
- Forty-eight plants
- Mulch bed

Sponsors of the Gardens may select the plantings which comprise their adopted intersection, or may use a planting group defined by the Arboretum.



Nine Franciscan Garden sites will be available at Van der Brohe Arboretum, with installations beginning in spring 2021. Please visit our website for up-to-date maps and details on availability.

Landscaping professionals, garden clubs, and other like-minded organizations are encouraged to participate. It is a wonderful way to give back to the community while promoting your business. Sponsorship will be recognized by an engraved stone panel which will be displayed as long as the plantings are maintained by the Sponsor.

Organizations or individuals interested in sponsoring a Garden but who are not be able to maintain it themselves are also encouraged to contact us so that we may match you with a group able to supply labor.