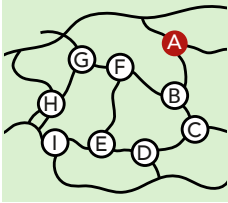




VAN DER BROHE  
ARBORETUM  
& BIRD SANCTUARY



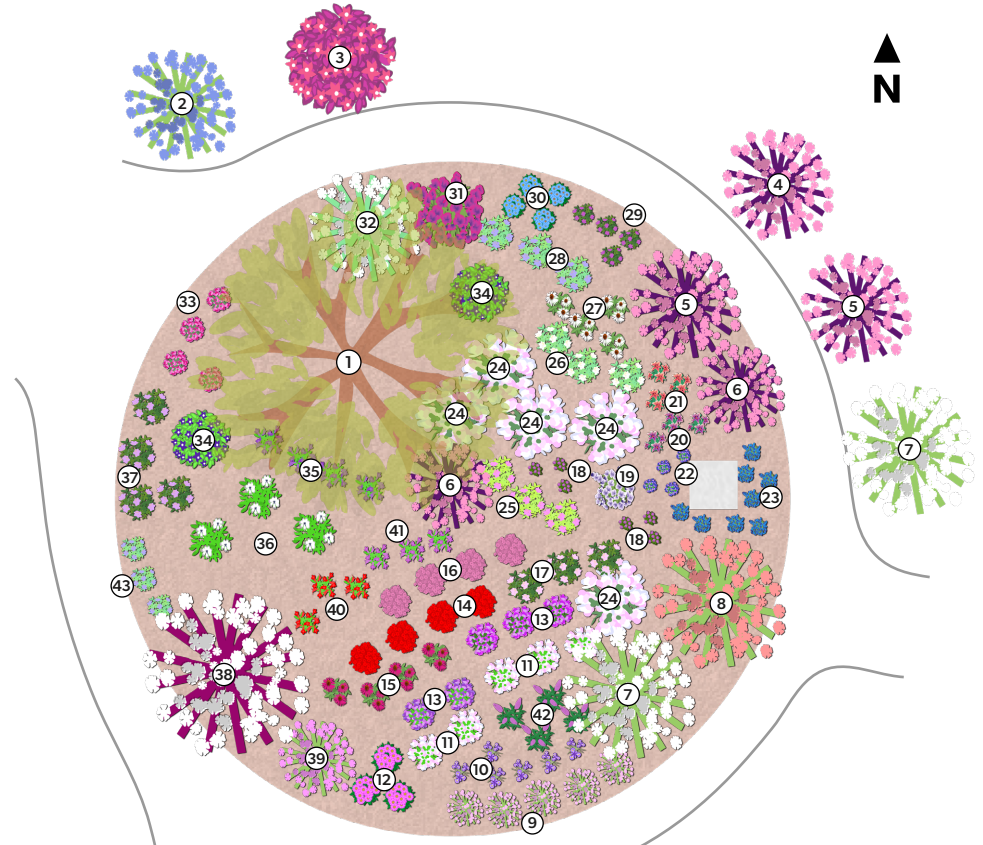
# "FOR THE BIRDS" Franciscan Garden Plot A

**Sponsor:** The Durbrow Family

**Designers:** John Durbrow; Bernie Zimmer, Manitowoc Master Gardeners

**Design Intent:** Recognizing that native flora and fauna species have co-evolved, this garden utilizes plant selections which would be most beneficial to the avian and wildlife community in their natural state. Cultivars of those selections have been used to augment the forage value of each plant species with the hope of compensating for the reduction of truly natural area. Cultivars have generally been propagated to enhance the variety, the longevity, and the beauty of a particular type of plant. It is in the anticipation that cultivars will be developed which enhance the value of garden plantings to both resident and migratory birds that the garden favors the concept of cultivars.

1. Donald Wyman Crabapple  
*Malus* 'Donald Wyman'
2. Regent Saskatoon Serviceberry  
*Amelanchier alnifolia* 'Regent'
3. Little Devil™ Ninebark  
*Physocarpus opulifolius*
4. Blacklace Elderberry  
*Sambucus nigra* 'Eva'
5. Black Tower Elderberry  
*Sambucus nigra* 'Eiffel 1'
6. Laced Up® Elderberry  
*Sambucus nigra* 'SNR1292'
7. Burkwood Viburnum  
*Viburnum x burkwoodii*
8. Cardinal Candy Viburnum  
*Viburnum* 'Cardinal Candy'
9. Tickseed  
*Coreopsis* 'Ice Wine'
10. Kirigami Deep Blue & White Columbine  
*Aquilegia caerulea* 'Deep Blue & White'
11. *Penstemon* 'Mystica'
12. Michaelmas Daisy  
*Aster novi-belgii* 'Eventide'
13. *Penstemon* 'Cha Cha Purple'
14. Cranberry Double Scoop Coneflower  
*Echinacea* hybrid
15. Pixie Meadowbrite Coneflower  
*Echinacea* hybrid
16. Pink Saucer Windflower Anemone  
*Anemone hupehensis* 'Pink Saucer'
17. Bee Balm Monarda Marshall's Delight  
*Monarda* 'Marshall's Delight'
18. Blazing Star  
*Liatris spicata*
19. Illuminati Tiny Tower™ Mock Orange  
*Philadelphus* s. 'SMNPVG' PP#31865
20. Achillea New Vintage Violet  
*Achillea millefolium* 'New Vintage Violet'
21. Achillea Milly Rock Red  
*Achillea millefolium* 'Rock Red'
22. Penstemon Blue Rock Candy  
*Penstemon barbatus* 'Novapenblu'
23. Prunella Freeland Blue  
*Prunella grandiflora* 'Freeland Blue'
24. Nikko Slender Deutzia  
*Deutzia gracilis*
25. Cat's Pajamas Catmint  
*Nepeta* 'Cat's Pajamas'
26. Ka-Pow White Garden Phlox  
*Phlox paniculata*
27. Puff Vanilla Coneflower  
*Echinacea* hybrid
28. Bluebird Smooth Aster  
*Aster laevis* 'Bluebird'



29. Bee Balm Monarda Balmy Rose  
*Monarda didyma* 'Balbalmose'
30. Wood's Blue Aster  
*Aster novi-belgii* 'Wood's Blue'
31. Miss Violet Butterflybush  
*Buddleia x* 'Miss Violet'
32. Pawnee Butte Sandcherry  
*Prunus besseyi* 'P011S'
33. Red Feather Ornamental Clover  
*Trifolium rubens*
34. Decadence® Sparkling Sapphires False Indigo  
*Baptisia* hybrid
35. Purple Illusion Speedwell  
*Veronica* hybrid
36. Whorled Milkweed  
*Asclepias verticillata*
37. Bee Balm Monarda 'Grape Gumball'  
*Monarda* 'Grape Gumball'
38. Purpleleaf Sandcherry  
*Prunus x cisterna*
39. Pink Flowering Almond  
*Prunus glandulosa* 'Rosea Plea'
40. Cherry Bells Bellflower Campanula  
*Campanula* 'Cherry Bells'
41. Wine and Rubies Bellflower Campanula  
*Campanula* 'Wine and Rubies'
42. Royal Rembrandt Speedwell  
*Veronica longifolia* 'Royal Rembrandt'
43. 'Platinum Blue' Globe Thistle  
*Echinops ruthenicus* 'Platinum Blue'
44. Cranberry Cotoneaster  
*Cotoneaster apiculatus*