

I would like to support Van der Brohe Arboretum with a contribution at the level indicated below:

Name(s): _____
Address: _____
Email: _____

- PATRON // \$500 Please add me to your volunteer list.
- ADVOCATE // \$200 Please add me to your email/newsletter list.
- SPONSOR // \$125 Please contact me about other levels of support.
- SUPPORTER // \$50
- FRIEND // \$35

To donate to Van der Brohe Arboretum using your credit card via PayPal, please visit vanderbrohearboretum.org/annual-appeal or scan the QR code with your phone



Thank you for your support!

Please detach and mail with a check payable to: Van der Brohe Arboretum
3800 Lincoln Ave., Two Rivers, WI 54241

Van der Brohe Arboretum is a tax-exempt, 501(c)(3) charitable organization. We acknowledge contributions are made solely for charitable purposes. Van der Brohe Arboretum does not provide good or services in exchange.

FUTURE PLANS

Van der Brohe Arboretum has many hopes for a full development program in 2025, with the following projects topping our list of plans:

Wetland Restoration Project

The wetlands in the southeast corner of the grounds will be structured to display the correlation of impounded water depth with aquatic plant colonies and aquatic organisms. The linking landscape swales will provide natural water filtration and mitigate run-off surges as part of a concomitant stormwater management plan.

Swift Towers

Swifts originally made homes of hollowed trees. As the forests were extirpated, the birds accommodated environmental change by moving residence to industrial and residential chimneys (inactive during nesting season). As America has adopted to industrial decline and alternative fuels, the Swifts are confronted with habitat loss once again. But the Swift tower is more than an ersatz chimney—it is a wonderful opportunity for design as an artistic sculptural stele.



Bird Gardens

We will continue the installation of bird gardens—dense thickets of plantings selected for their provision of both forage and habitat for migratory and resident birds. The character of these gardens will vary according to target environments, from compact isolated installations to imitation fence lines.

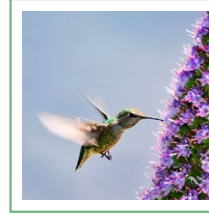
Requiem for the Ashes

We plan to host an event in spring of 2025 during which a dozen chainsaw artists will be invited to transform the ground's declining Ash trees into legacy art. We expect twelve individuals/teams to each transform an Ash trunk into a massive sculpted object.

Trees are the essence of an Arboretum, and VDBA will display every tree that will tolerate the local climate. Trees will be displayed in loose groupings by species and parterres will feature major families of trees planted in forests and groves.



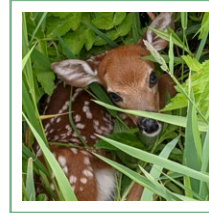
Birds are central to the mission of the Arboretum. Van der Brohe Arboretum will provide an abundance and a variety of habitat, food, and nesting sites. The Arboretum is now a designated eBird hot spot. Visit ebird.org for information.



Art will reinforce the lessons learned from natural ecologies through long-term and temporary installations of large-scale public environmental art. A juried selection will present pieces which address the themes underlying the motive of the Arboretum.



Meadows provide shelter for small animals and ground-dwelling birds. Bunch grasses allow for shelter, nests and habitat. Prairie plants produce seeds and host insects—a prime food source for native birds and animals. Drifts of native flowers and thickets of fruiting shrubs bring seasonal beauty and promote birds and pollinators.



**VAN DER BROHE
ARBORETUM**

**2024 ANNUAL
APPEAL**

Van der Brohe Arboretum & Bird Sanctuary is a nature preserve, bird habitat, and migratory stop-over site that we are delighted to share with visitors.

It is through the support of individuals and other donors that we remain able to develop and maintain the features which allow public enjoyment of the premises.

JOHN S. DURBROW

PREMISE

DEAR ARBORETUM ENTHUSIAST,

Take a look at what you have done! Since you last heard from us, the grounds have been much improved for the birds, wildlife, and for the Arboretum visitor. 2024 has been an exciting year, and 2025 will see a continuation of this excitement. The organization has grown with new staff to realize and operate these developments. We have installed trails, gardens, benches and other features to make a meandering stroll an immersive experience of nature. We are committed to creating a sanctuary and refuge for quietude and contemplation. We invite you to visit the Arboretum and enjoy the land, birds, wildlife, and gardens, as well as the new features highlighted below.

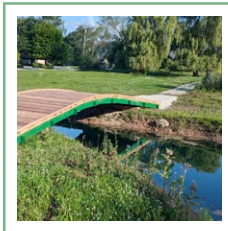
GRIMM IVY WALLS

Central to the Arboretum mission is the provision for birds and wildlife and the exhibit of artistic installations. Four freestanding steles have been erected to support four different ivies. Boston Ivy, Engelmann Ivy, wild grape, and another prolific growing ivy have been planted and will drape each in a shroud of berry producing, sheltering foliage. The walls may be seen as structured trees, providing forage and habitat. Arranged in a stepped echelon, the walls have an iconic and enigmatic presence in the otherwise treeless Schweiger Prairie.



RIVERVIEW PONDS & BRIDGE

The two ponds at Riverview Drive were originally part of the golf course irrigation system. They did not hold water, and frequently dried out. This past spring, the ponds were lined with clay, co-joined, and spanned with a low arch bridge. The aquatic wildlife

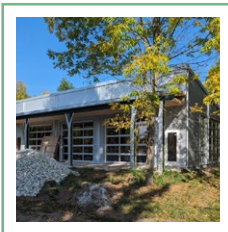


responded with enthusiasm. Turtles, crayfish, frogs, and aquatic invertebrates are present in abundance. The geese and ducks immediately laid claim to the waters, with several hatches of goslings. Many varieties of aquatic plants were installed to revegetate the perimeter, and Steinie's Watergardens have donated another dozen plants to extend variety of this display.



WEST FOUNDATION PROPAGATION CENTER

The Arboretum had a need for a center of operations. The Propagation Center has been designed and constructed to be a multi-faceted building that will accommodate activities, operations, and utilitarian requirements. The broad porch facing the trails will allow disparate groups to organize and stage their own events on the organization grounds. The building uses will focus on potting seedlings, housing the mobility carts, accommodating volunteer activities, and hosting workshops and events related to Arboretum activities.



GEORGE E. & SUSAN E. SCHIERECK GRIMM COUNCIL CIRCLE

An homage to the Native American installations of the same name, the Council Circle at VDBA allows for groups or individuals to congregate and commune. Constructed of Valders limestone, the circular seating area can comfortably accommodate 22 individuals around the



propane-fueled fire pit. The pavement is comprised of panels that can be sponsored for inscriptions and dedications.

MOBILITY CARTS

Through the generosity of Mr. George Grimm, we now have a veritable fleet of mobility carts available for those with limited mobility to meander through the trail system and immerse themselves in the natural environment. Until we have secured electrical service to the Propagation Center, use of the carts will be limited and require pre-arrangement.

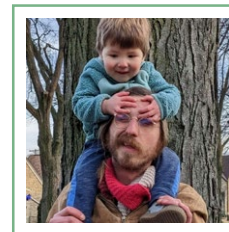


NEW PERSONNEL

Krandin Zelinske has joined the staff as our Administrative Coordinator. Kraindin exceeds the job title limitations and also acts as the Arboretum Ambassador, our social media manager, and photographer. Kraindin is a native of rural Two Rivers, where she resides with her family and horses on the ancestral farm. Her email is coordinator@vanderbrohearboretum.org.



Volunteer Coordinator and Program Manager **Rory Petry** has brought a breadth of knowledge to VDBA from his previous position at the Mitchell Domes in Milwaukee. If you have been on the grounds, you have likely made Rory's acquaintance. He organizes many levels of volunteer activities to advance the status of the Arboretum. To become part of the volunteer crew, contact Rory at volunteer@vanderbrohearboretum.org.



YOU CAN MAINTAIN OUR GROWTH

Over the past five years, with the help of some very generous donors, Van der Brohe Arboretum and Bird Sanctuary in Two Rivers has been transformed into a healthy habitat for birds, animals, and plants. We now have over 1400 trees planted, representing over 250 species and cultivars. The transformation continues next year with an additional 800 trees to be planted. Additionally, the 44 acres of pollinator meadows exhibit a constant iteration of successional beauty.

Our fundraising efforts—the annual Tree Sale and Garden Wine Crawl—have become institutions. Fundraising efforts such as these, and this annual appeal, are essential if the Arboretum is to continue to grow and thrive. Our success depends on people like you who have a love for nature and are willing to give, as well as volunteer your time and energy.

We are pleased to announce the continued support of **Friends of the Van der Brohe Arboretum & Bird Sanctuary**, dedicated to the goal of advancing the mission of the Arboretum. You are invited and encouraged to become or continue as a Friend of the Van der Brohe Arboretum and Bird Sanctuary.

Kindly complete and detach the contribution portion of this flyer and mail it to the address indicated, with your check payable to "Van der Brohe Arboretum." Your reply by Oct 31, 2024 (Halloween) is appreciated and will assist us in future planning. If you have made a contribution outside of this appeal window, we thank you and apologize for the duplicate request. If you have any questions or comments, please email director@vanderbrohearboretum.org.

Thank you for your consideration, involvement, and continued support.

Sincerely,

Elizabeth (Betty) Bittner

Chairperson, Friends of the Arboretum