



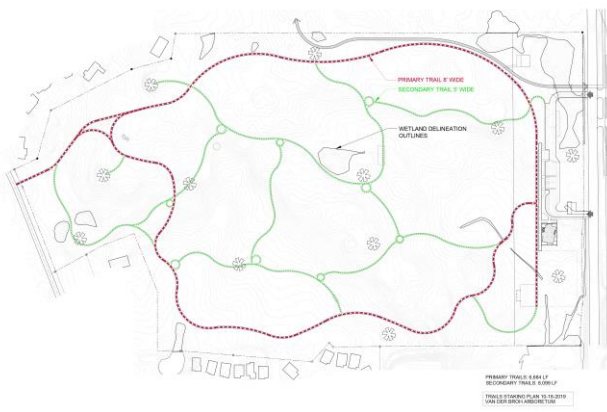
Van der Brohe Arboretum
and Bird Sanctuary
Spring Update
April 2020

Director's Notes

We leave the winter that wasn't and find Spring to be alive and well! However, 2020 will be year of massive disruption on the Arboretum grounds, and those looking to delight in the subtleties of emerging growth and regeneration will be sorely disappointed. The scale of change occurring on the grounds will be transformative and very messy. We will emerge with a strong basis for the build out (or plant out) of the comprehensive Ecological Masterplan, and a clear delineation of the various tasks involved in its realization.

You will see below that progress is underway on many fronts. For an overview of the intended work, please visit our most excellent website, developed by Amy Pace; www.vanderbrohearboretum.org.

Trail System Underway



Kevin Madson and his crews made good use of the mild winter weather to begin the trail installation. Strategically timing work to coincide with ground conditions, they excavated the trail when soft, but then stocked gravel when the surface was frozen, avoiding rutting the grounds with the heavy equipment. Taking a break for mud season, they are back on the job laying out geotextile fabric and the

limestone screenings. The perimeter trail is eight feet wide, and exactly one mile in length. A network of secondary trails winds through the Arboretum linking art nodes and Franciscan Gardens, as well demarking the planting taxonomies. Because of the thoughtful sequencing of work, the Arboretum is way ahead of schedule on the development of the essential structure of the grounds.

Birdhouse Installations

David Villeneuve, Director of the Van der Brohe Arboretum Housing Authority, got a jump start on the installation of nesting boxes this Spring, with the placement of two Wood Duck houses and 18 cavity boxes intended for Bluebirds and House Swallows. Dave built the cedar houses over the winter, and believes they were erected early enough in the season to attract appreciative tenants this year.



Dave monitors the installed boxes to deter predators and gauge activity. More and a more diverse range of houses will be completed for each nesting season.

2020 Prairie and Pollinator Meadow Planting

As is often pointed out, the planting of trees is a long term vision and enterprise. It is projected that the Arboretum will eventually have 1070 specimen trees representing 254 species and cultivars. There will be an additional 1055 small trees, shrubs, bushes and vines, collectively known as "birdberries". It will take many decades for these plantings to establish a canopy, so the dominant feature of the Arboretum for that period will be the open grass lands that will be planted this year. Five distinct seed mixes have been specified for upland sites, and three additional will be utilized in the wetland areas. The seed mixes have been selected to maximize habitat and forage

for both migratory and resident birds.

Planting a prairie, which comprises warm season grasses and forbs, requires the elimination of the existing vegetation, which is mostly cool season grasses and invasive species. This process involves spraying the planting area with an herbicide in late spring or early summer, and then again in fall to kill the plants sprouting from the residual seed bank. The ground will be lightly tilled after the first application to release dormant seeds. Because of these activities, the majority of the Arboretum grounds will be browned out for the entirety of this year.

The area between the perimeter trail and the adjacent properties **will not** have the herbicide application. That area will be maintained in the current turf, except for spot treatment of invasives.

The perimeter zone will be planted with a group of trees and thickets representing a varied selection of materials. Those species which will occupy the periphery and could possibly be planted this year, should funding become available, include:

American Mountain Ash (*Sorbus americana*)
Rabina Mountain Ash (*Sorbus aucuparia*)
Shipova Mountain Ash (*Sorbus x Pyrus*)
European Mountain Ash (*Sorbus aucuparia*)
Northern Mountain Ash (*Sorbus decora*)
Horse Chestnut (*Aesculus hippocastanum*)
Yellow Buckeye (*Aesculus flava*)
Ohio Buckeye (*Aesculus glabra*)
American Beech (*Fagus grandifolia*)
Basswood (*Tilia americana*)
Chinese Catalpa (*Catalpa ovata*)
Northern Catalpa (*Catalpa speciosa*)
Black Cherry (*Prunus serotina*)
Hackberry (*Celtis occidentalis*)
Yellowwood (*Cladrastis kentukea/lutea*)
Honey Locust (*Gleditsia triacanthos inermis* 'Skyline')
American Hornbeam (*Carpinus caroliniana*)
Downy Hawthorn (*Crataegus mollis*)
Washington Hawthorn (*Crataegus phaenopyrum*)
Green Hawthorn (*Crataegus viridis*)
Green Hawthorn Winter King (*Crataegus viridis* 'Winter King')
Carolina Silverbell (*Halesia carolina*)
Cockspur Hawthorn (*Crataegus crusgalli*)
Weeping Willow (*Salix babylonica*)

The plantings in the prairie zones will begin in spring of 2021. The tree species associated with each Thematic Parterre can be seen on the webpage.

Two River Common Council Approval

On April 6th, The City of Two Rivers Common Council approved a zoning change, applicable to the Arboretum property, from R-1 to C-2. In the process they clarified some language in the ordinances regarding the sequencing of building construction and usage. The Arboretum wishes to thank the many individuals at City Hall for their support.

Glacial Lakes Tour and Discovery Day **September 12 (Saturday, 10 AM): A Restorative Tapestry**

Meet at the Van Der Brohe Arboretum and Bird Sanctuary for a walking tour and presentation by VDBA founder John Durbrow and ecologists Steve Apfelbaum and Susan Lehnhardt. Steve is the noted author of "Restoring Ecological Health to your Land." Learn about and observe methods of restoring land health and the creation of migratory bird habitat. Cost: \$25/person proceeds go to GLC.

E-mail Delivery of Newsletters

Newsletters will be delivered via e-mail by the service MailChimp. The US/Can Spam Act requires that those interested in receiving such notices should sign up. Please go to the webpage and state your interest by submitting your e-mail address. We will never share the email list (or volunteer list) with any third party.

A Major Thank You!

Those of you who have visited the site are aware of the extent of construction. This work is only possible due to the generosity of our donors and the diligent efforts of our Board Members. The pace of the Arboretum development will reflect the extent of the support of the community. So far, it has been exemplary!



Van der Brohe Arboretum Board:

John S Durbrow; Chairperson
Hanna Edelglass; Secretary
Jerome Fox
Diane Lupke; Vice Chairperson
Jim Rasmus
Katherine Reynolds
Ron Schaper
Karen S Steingraber; Treasurer